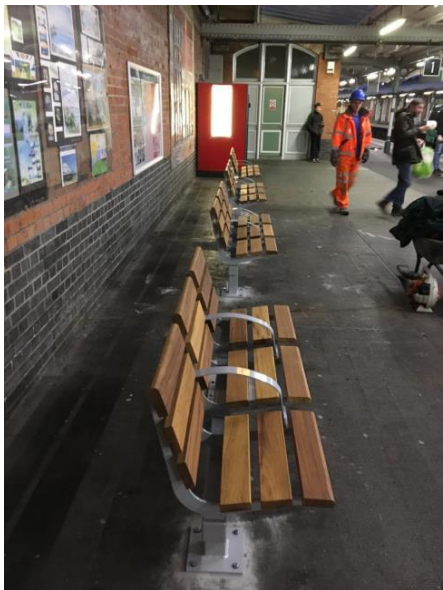



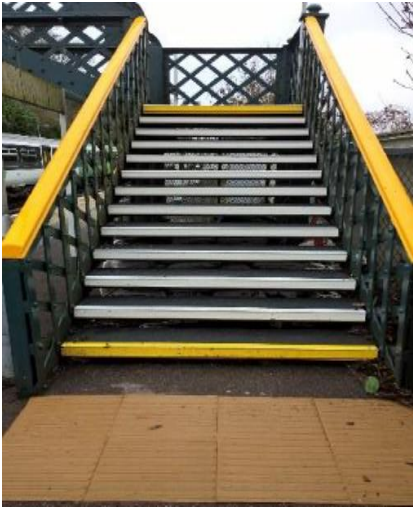
Local Passenger Benefit Scheme Cost Examples

Introduction

Please find below examples of previously delivered station improvements across GTR stations which serve as guide for stakeholders on what can be achieved with their station allocation from the Passenger Benefit Fund. Please note that the figures quoted are given as a guide and are subject to individual review, surveys and approvals from Network Rail (who own the Infrastructure). Consideration within the costings also need to be given for ongoing maintenance of the schemes delivered by the Passenger Benefit Fund.

Example Schemes

| Improvement | Considerations | Estimated Value |
|-----------------------------------------------------------------------------------------------------------------------------------------------|-------------------------------------------------------------------------------------------------------------------------------------------------------------------------------------------------------------------------------------------------------------------------------------------------------------------------------------------------------------------------------------------------------------------------------------------------------------------------------------------------------------------------------------------|----------------------------------------------------------------------------------------------------------------------------------------------------------------------------------------------------------------------------------------------------------------------------------------------|
|  <p data-bbox="51 1417 256 1451"><i>Platform Seating</i></p> | <ul data-bbox="614 779 1093 1064" style="list-style-type: none"> • Location to be positioned at least 2500mm from platform edge. • Avoid lowering lighting and CCTV columns • Does not impact passenger movements • Positioned with visibility of available information systems. | <p data-bbox="1117 779 1528 878">£1,000 per seat including install. (Economies of scale available for bulk orders)</p> |
|  <p data-bbox="51 1989 151 2018"><i>Signage</i></p> | <ul data-bbox="614 1458 1093 1960" style="list-style-type: none"> • Directional signage and wayfinding signage to be secured to appropriate fixings and sufficient clearance of operational lines and head heights (min 2500mm). • Meet required branding and British Standards • Branding of local businesses / interest groups to be reviewed by the GTR Commercial Team. • Changing name of stations is expensive and requires all operational notices, back-office systems, control updates | <p data-bbox="1117 1458 1528 1556">£1,000 - £30,000 (dependant on size of station and number of signs being replaced).</p> <p data-bbox="1117 1601 1528 1736">Costs for post mounted signage and signage requiring possession of the tracks will need to be priced independently.</p> |



Stair Tread Refurbishment

- Fixing details to existing footbridge / staircase.
- Timings of works (overnights / non-peak times)

£10,000 per staircase
£18,000 for two staircases
£25,000 for three staircases

Estimated costs – dependant on access.



Toilet (refurbishment)

- Have toilets been closed for a reason e.g. blocked/collapsed drains?
- What hours are the toilets in operation?

£20,000 - £50,000 dependant on size and level of refurbishment



Toilet (new facility / disabled)

- Provision of utility supplies (waste, water supplies).
- Available space within the station and within in GTR / NR land ownership.

£75,000 - £100,000 dependant on location and utility connections.



Ticket Vending Machines

- Ability to provide power, data and suitable foundation to site Ticket Vending Machine.
- Ability for staff to service the machine within existing cash handling protocols.

£20,000-£25,000 dependant on electrical and base connections



Customer Information Screens

- Location to be positioned at least 2500mm from platform edge.
- Avoid lowering lighting and CCTV columns
- Does not impact passenger movements
- Power and data connections to the screen

£20,000 CIS screen (single sided), post and fixings
£25,000 CIS screen (double sided), post and fixings



Waiting Shelter

- Location to be positioned at least 2500mm from platform edge.
- Avoid lowering lighting and CCTV columns
- Does not impact passenger movements
- Requirement for secured foundation/fixings
- Positioned with visibility of available information systems.

£15,000 - £50,000 (dependant on available size, foundations)



Waiting Room

- Location to be positioned at least 2500mm from platform edge.
- Avoid lowering lighting and CCTV columns
- Does not impact passenger movements
- Requirement for secured foundation/ fixings
- Power connections for automatic door/heating and ventilation systems
- Positioned with visibility of available information systems.

£80,000 - £150,000 (dependant on available size, foundations)



Cycle Parking

- Location to be positioned at least 2500mm from platform edge.
- Avoid lowering lighting and CCTV columns
- Does not impact passenger movements
- Requirement for secured foundation/fixings

£1,500 – Cycle Hoop
£5,000-£7,000 – Cycle Parking (Toast Rack)
£25,000 – Covered two-tier cycle parking facility – 10x spaces
£50,000-£200,000 – Cycle Hub (size dependant)